

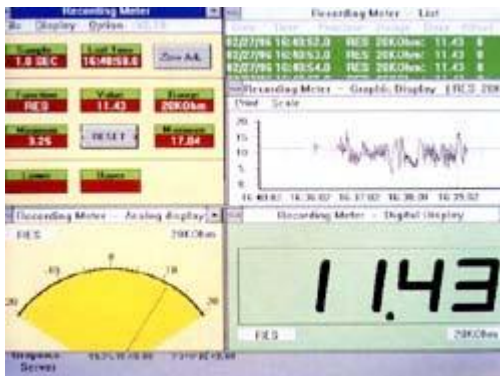
TES-2732 Datalogger Multimeter (RS-232)

FEATURES

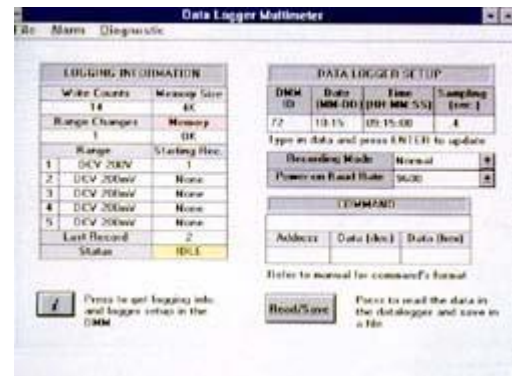
DMM talks with P.C. via RS-232 interface
 Data Logger function
 Direct input of V, A, Ohm, Hz, Cx & o C/ o F
 without any further signal modification



SPECIFICATION



PC view-1



PC view-2

Voltage (AC/DC)

Range	200m/2/20/200/750(AC)/1000V(DC) Accuracy: DC - (0.5% rdg + 1 dgt) AC - (1.0% rdg + 5 dgts)
Resolution	0.1m
Input Impedance	10MΩ
Overload Protection	600Vrms

Resistance (Ω)

Range	200/2K/20K/200K/2M/20M
Accuracy	0.8% rdg + 2 dgts
Resolution	0.1 Ω
Overload Protection	600Vrms
Max. Open Circuit Voltage	3.2V
Max. Allowable Applied Voltage	500Vrms

Diode Test

Resolution	1mV
Accuracy	2% rdg +2 dgts
Max. Test Current	1.0mA
Max. Open Circuit Voltage	3.2V

Capacitance (F)

Range	2000p/200n/2 m /20 m F
Accuracy	3% rdg + 10 dgts
Test Frequency	400Hz
Data logger function for TES-2732 only	

Continuity Beeper

Operation Resistance	Below 30 Ω
Max. Open Circuit Voltage	3.2V

Frequency (Hz)

Test Range	10Hz to 20MHz (Auto Range)
Range	2K/20K/200K/2M/20MHz
Resolution	1 Hz
Accuracy	0.5% rdg + 2 dgts
Input Sensitivity	100mV
Max. Allowable Applied Voltage	600Vrms.

Current (AC/DC)

Range	200 m /2m/20m/200m/20A (AC/DC)
Accuracy	DC - (1.0% rdg + 1dgt) AC - (1.2% rdg + 3dgts)
Resolution	0.1 μ A
Burden Voltage	0.35V
Overload Protection	0.5A/250V Fast Blow Fuse & Diode 20A/380V

Specifications

Size & Weight	180mm(L) x 82mm(W) x 38mm(H) & 365g
Accessories	Test leads, Spare Fuse, Battery, Operation Instruction, Optional rubber holster. Connecting Cable & Software disc for TES-2730/2732

Temperature

Range	-50 $^{\circ}$ C to 1370 $^{\circ}$ C -50 $^{\circ}$ F to 1999 $^{\circ}$ F
Resolution	0.1 $^{\circ}$ C & 0.1 $^{\circ}$ F
Sensor	"K" type

Display:

3-1/2 Digital LCD Display

Maximum Reading 1999

Sampling Rate: 2.5 readings per second

Operation/Storage Condition:

0 $^{\circ}$ C to 40 $^{\circ}$ C < 80% R.H.

-10 $^{\circ}$ C to 60 $^{\circ}$ C < 70% R.H.

Power Source: one 9V Battery